

How to install

This installation installs all the required files for the ASAR-controller in case you have already installed the Arduino IDE.

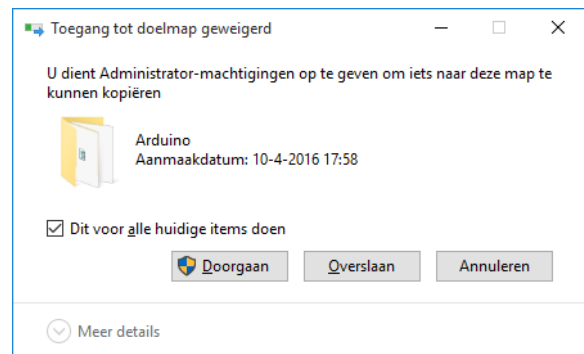
The zip file ASAR.zip contains all these files.

Do as follows:

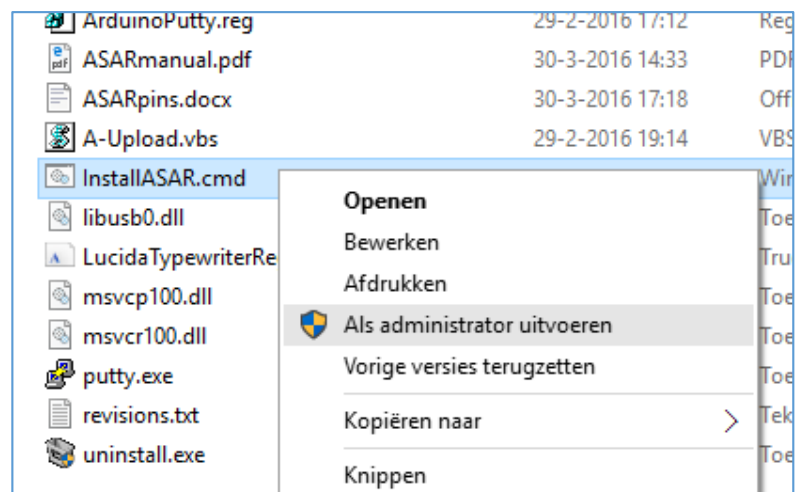
Unzip ASAR.zip and copy the complete content to the folder where the Arduino IDE is installed.

This is usually the folder
C:\program files (x86)\Arduino.

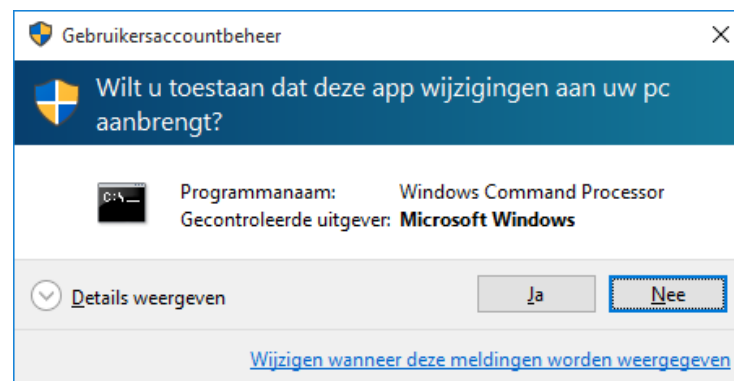
Click *Continue* to start the copy process.



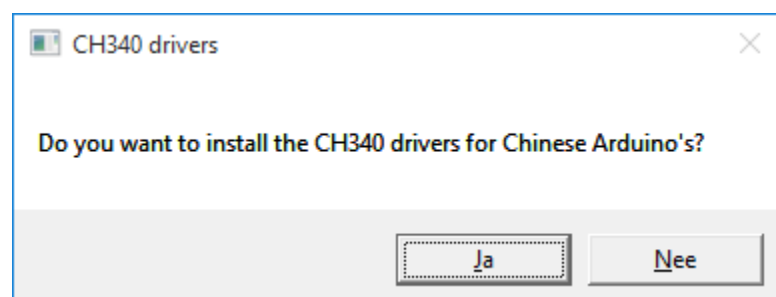
Click with the right mouse button on the file
InstallASAR.cmd and click on *Run as administrator*



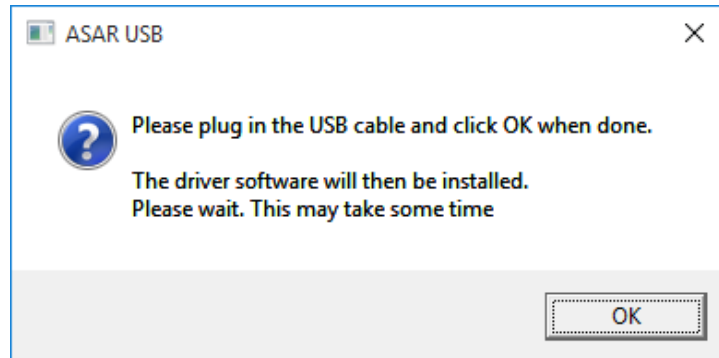
Click Yes to the UAC question



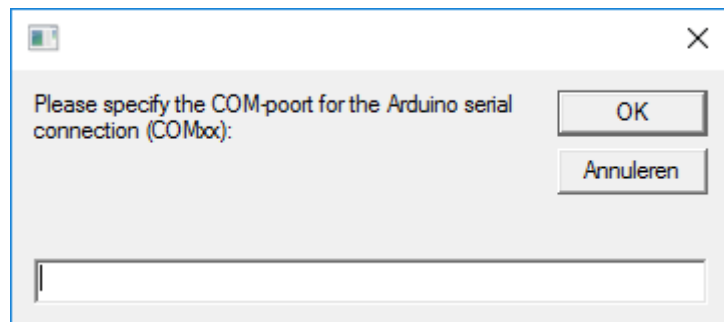
Click Yes if you want to install the CH340 drivers. If you have a Chinese Arduino clone then you need those drivers



If you selected to install the CH340 drivers you will be prompted to plug in the USB cable. The drivers will then be installed and the COM-port will be detected automatically.



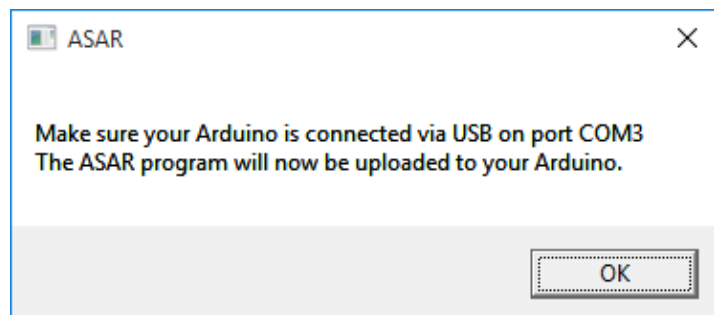
If you did not install the CH340 drivers you will be asked for the COM-port that is used for the Arduino.



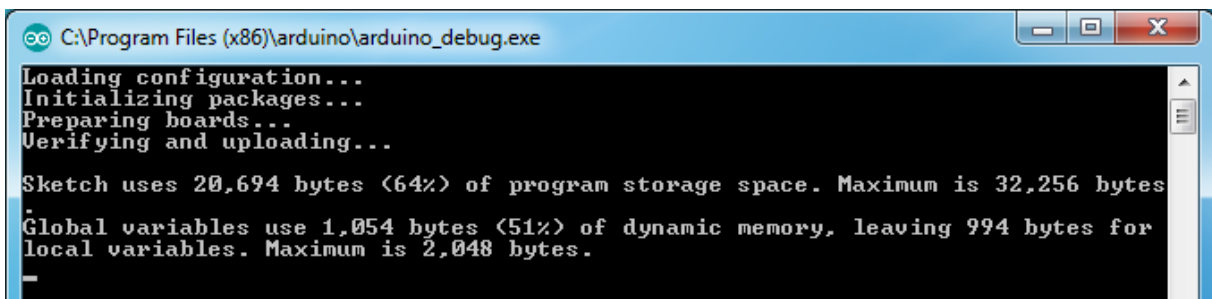
Connect your Arduino to the PC if you have not yet done so.

Connect your Arduino always to the same USB-port!

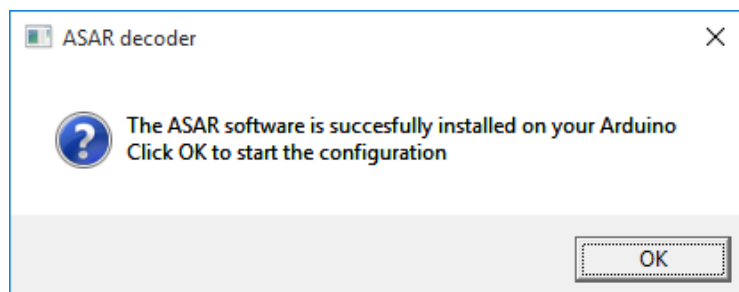
Connecting to another USB port results in another COM-port.



After clicking *OK*, the ASAR software is uploaded to your Arduino



After a successful upload, you can now start the configuration:



```
ASAR, the Analog Servo controller with ARduino on COM3
ASAR, the Analog Servo controller with ARduino
USB version 1.0

Specify number for this ASAR
Enter value from 1 to 100: 1
This is your ASAR number 1

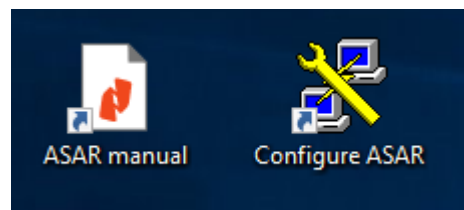
Starting configuration of ASAR #1

Do you want to do a quick configuration ? Y/N:
```

New shortcuts

On the desktop there are two new shortcuts:

- *Configure ASAR* starts the configuration of the decoder.
- *ASAR Manual* opens the manual (pdf document).



In the start menu there are two additional new shortcuts

- *Upload ASAR* starts a script for uploading ASAR to the Arduino.
- With *Settings for configuration* you can change the settings of the configuration program. See also the manual.

